



The GS line



REINVENTING THE ART OF PERFORMANCE

The passion and style of Lexus has been reborn in a line of vehicles that promise both remarkable beauty and pure performance.

From the very first glance, the Lexus GS reveals itself as a dynamic yet graceful vehicle with a true performance edge.

The GS line represents four dynamic expressions of luxury infused with passionate finesse delivering a captivating and exciting driving experience. With its long profile and broad stance, the GS has raised the thresholds of design elegance and artful execution in this striking embodiment of the Lexus design philosophy, L-finesse.

When it comes to power, the choice is yours. On the one hand there is the exhilarating performance of the conventionally powered GS300 and GS460, and on the other the supremely quick and exceptionally efficient GS450h Lexus Performance Hybrid.

Of course whichever model you choose, strict adherence to the Lexus values of questioning the status quo, employing dramatic new technologies, and striving for the highest levels of automotive refinement ensures that each GS will deliver an incomparable driving and ownership experience.

GS300 - Powered by a sophisticated direct injection 3.0 litre V6 engine with dual VVT-i, the GS300 is efficient, vigorous and undeniably attractive.

GS300 Limited - Adding to the panache of the GS300 is the GS300 Limited. This automotive package features Satellite Navigation, a clever pre-crash safety system with radar cruise control and extensive interior refinements. On the outside distinctive 18" alloy wheels set GS300 Limited apart.

GS460 - Enjoy life's luxuries and eager for an energetic driving experience? The GS460 boasts a 32 valve 4.6 litre V8 powerhouse and an 8-speed Electronically Controlled Automatic Transmission with sequential manual mode for truly impressive performance.

GS450h - The GS450h is a bona fide technological showcase. As well as featuring the world's first performance hybrid system with a front-mounted engine and rear-wheel drive, the GS450h is the epitome of luxurious refinement and advanced engineering.



LEXUS GS300



LEXUS GS300 LIMITED



LEXUS GS460



LEXUS GS450h



AUTOMOTIVE SCULPTURE

The GS styling reflects a look of action tempered with refinement. Lexus designers describe it as a fusion of opposing forces, where broad sweeping curves meet complexity to create a lean, dynamic form. This bold new direction has set the design agenda for a new generation of Lexus cars. It's called L-finesse, which stands for 'leading edge design with finesse' and it embraces this new philosophy of design with confidence.

Long, graceful lines cast a vision of perfectly balanced elegance and power while 'slingshot' rear windows and dramatically swept back headlights hint to the car's true dynamic potential. The long bonnet and pulled-back cabin leading to a short rear overhang evokes more coupé-like proportions, breaking from the tradition of current rear-wheel drive sedans.





THE PULSE QUICKENS

The performance of the Lexus GS has been optimised to move your emotions as well as your body.

Within every GS is a high-performance petrol engine with Direct Injection and dual VVT-i. The result of such advanced technologies is greater torque for seamless acceleration and improved breathing for more top end power. What's more, as fuel is injected in extremely fine particles, the GS expels cleaner emissions and shows a marked reduction in fuel consumption.

For an extra performance boost, the GS450h sports a high voltage electric motor for V8-like power and exhilarating acceleration.

Controlling the power en-route to the rear wheels of the GS300 and GS300 Limited is a six-speed Electronically Controlled automatic Transmission (Super ECT). With intelligent shift control logic, power delivery is more precise during hard acceleration and deceleration. GS460 power delivery is taken a step further with a state-of-the-art 8-speed Electronically Controlled automatic Transmission (Super ECT) which also features a unique Driving Response and Acceleration Management System (DRAMS).

Smoothness is taken to a new level thanks to the Lexus Hybrid Drive system and the GS450h's Electronic Continuously Variable Transmission (ECVT). A fluid, effortless flow of power is provided with no shift change feel. Sequential Shift on all models offers the performance driving dynamics of a manual.

It is comforting to know that the sophisticated technologies driving the GS are also designed to add to your driving

pleasure. The Electronic Power Steering (EPS) system offers you precisely measured assistance whenever it's needed and is designed to enhance rather than obscure your feeling of involvement and control. EPS also contributes to fuel savings by operating only when it's required; unlike more conventional hydraulic systems that need constant operation of the hydraulic pump. So, when little or no steering assistance is required, such as when driving on a straight, uninterrupted road, almost no energy is needed and fuel consumption is reduced.

The EPS system of the GS460 and GS450h includes a Variable Gear Ratio Steering (VGRS) system to vary the level of assistance required. At lower speeds it takes fewer turns of the wheel to manoeuvre in or out of parking spaces then, as you accelerate, the steering ratio decreases, helping to maintain a feeling of connection between the vehicle and the road. The VGRS system also helps to stabilise the car during cornering or on slippery surfaces.

To deliver the driving experience you would expect from a Lexus, the GS line incorporates fully independent double wishbone front and rear suspension setups with stabiliser bars.

Adding to this, the advanced Adaptive Variable Suspension (AVS) system ensures excellent response and maximum driving stability by monitoring speed and steering information for variable controlled damping and improved vehicle handling. A standard or sport setting can also be selected to enable the GS's behaviour to match your driving mood.



ADVANCED PERFORMANCE

As you would expect, the Lexus GS offers a host of driving aids and stability features to keep you safely in control. From its advanced performance management technologies to the sophisticated braking and cruise control systems, you can be sure that the GS will move you with balanced power and composure.

While on the move, Vehicle Stability Control (VSC) monitors body movement, steering angle, and braking pressure to calculate and distribute brake pressure to each individual wheel. So, on slippery roads or during emergency manoeuvres, VSC will be on your side.

Working alongside VSC is Traction Control (TRC). Sensing the onset of wheelspin, TRC selectively applies the brakes and automatically transfers power to the driving wheel for better grip.

To effectively balance the power of the GS, the line features powerful disc brakes front and rear for superb stopping power. The Anti-lock Braking System (ABS) prevents the artfully sculpted wheels from locking, while Brake Assist (BA) supplements braking effort, and the Electronic Brake-force Distribution (EBD) system modulates and directs brake pressure for enhanced control.

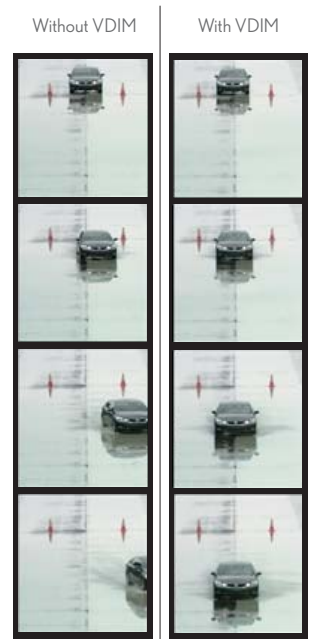
Within the GS lies an advanced and intuitively proactive control technology that stabilises the behaviour of the vehicle. The newly-developed Lexus Vehicle Dynamics Integrated Management (VDIM) system integrates the independent functions of the VSC, TRC and ABS into a single system and provides smooth control

by operating before the limit where the vehicle's behaviour is disrupted. The VDIM system in GS460 and GS450h includes an active steering function that automatically controls the steering angle of the front wheels using the Variable Gear Ratio Steering (VGRS) and Electronic Power Steering (EPS). It simultaneously achieves high preventative safety, ideal control and exceptional driving stability.

A Lexus, we believe that the best form of protection is to prevent accidents from happening in the first place. With this in mind, we have taken a conventional cruise control system and combined it with intuitive technologies to actively monitor the driving environment and maintain safe following distances. Unique to the GS300 Limited, GS460 and GS450h, this Dynamic Radar Type Cruise Control System helps you to maintain a safe following distance on the open road, slowing the vehicle if necessary and then returning you to your preferred speed as the road ahead clears.

Linked with this active cruise control function is the Pre-Crash Safety system. The radar sensor, vehicle orientation and brake force is constantly monitored, allowing the GS300 Limited, GS460 and GS450h to pre-empt a collision and protect occupants by retracting the front seat belts and setting the brake control system to stand-by mode.

VDIM is an advanced technology that allows the braking, stability and steering systems to work together, resulting in peerless acceleration, turning and stopping performance and allowing you to feel safer and more secure regardless of the conditions.



Under the attractive exterior of the GS lies a masterpiece of engineering. This steel-reinforced unibody structure with specific crumple zones in the front and rear is designed to compress at a controlled rate to help absorb impact energy. To help resist cabin intrusion during a possible lateral collision, the doors are reinforced with sturdy side-impact door beams.





POETRY IN MOTION



The artful and athletic body of the GS is undeniably attractive. Delve further and you will see that within this beautiful body lies a host of intuitive and intelligent features.

The muscular body of the GS rides on artfully sculpted alloy wheels with each model sporting a unique design to turn heads as well as add to your driving pleasure. The GS300 has exquisitely crafted and light-weight 17" alloy wheels wrapped with 225/50 R17 tyres while all other models feature 18-inch alloy wheels fitted with 245/40 R18 low profile performance radial ply tyres for excellent grip and handling.

The headlights are not only attractive but they will help you see what's around the next corner as the Adaptive Front-lighting System (AFS) redirects powerful High Intensity Discharge (HID) low beams around bends. What you might not notice is the pop-up headlight cleaners which are concealed in the headlight moulding and remain out of sight until required.

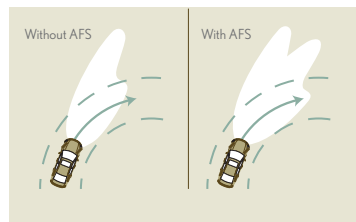
The intelligence of GS is widespread. Rain sensing front windscreen wipers sense the onset and frequency of raindrops, then adapt to suit to keep your view ahead free from disturbance. What's more, water-repellent front side glass rapidly clears away any rain, further improving visibility.

Ultraviolet rays from sunlight passing through a car's windscreen and windows can make the interior uncomfortably warm.

That's why UV-reducing glass is used in all Lexus vehicles to significantly reduce this heat build up. Another benefit of this glass is the reduction of sun damage to both the sumptuous leather interior and any occupants.

Approach the car with the Lexus Smart Key in your pocket and LED spot lighting will come to life, intuitively sensing your arrival and lighting your way into the car. Squeeze the door handle and the doors unlock automatically. Press a button on the handle and this intuitive system will also lock up for you and set the alarm when you leave. Smart. This clever system also extends to the interior of the vehicle, allowing you to start your vehicle with the simple touch of a button.

This surely is a car that reaches out and urges you to drive it.



AFS function when cornering.



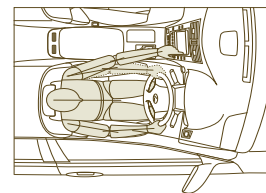
ULTIMATE DRIVER CONTROL

At Lexus, we know that in order to keep you safe it helps to know exactly what's going on at all times.

The layout and location of controls contributes to a sense that the GS is welcoming you to your own personal space. There's an attitude of simplicity and sensibility, enhanced by metal accents, wood and fine leather trim. For maximum control you are guided by a multi-information dash incorporating the world's first Electro Chromatic Device (ECD) in the meter glass. It automatically reduces sunlight reflection, improving instrument legibility. After dark, the glass becomes transparent again for greater clarity.

You'll also appreciate electro chromatic mirrors which intuitively dim the glare of following traffic.

An important function of the GS450h Lexus Hybrid Drive system is the use of power. This is why instead of a typical rev counter, the GS450h is fitted with a specially designed energy monitor to measure power flow in kilowatts and the amount of energy being regenerated from the wheels. The centrally-located multi-information display shows other key information such as outside temperature, battery status and fuel consumption statistics, as well as alerts such as open doors.



All driver controls are conveniently positioned so you get the most out of your driving experience.



A seven-inch Electro Multi Vision (EMV) colour touch screen is set in the centre console of the GS and represents an important and interactive source of information. In GS300 Limited, GS460 and GS450h the EMV screen displays information for the Satellite Navigation System. In all models the EMV screen gives you control over the vehicle's dual zone climate control air conditioning system and impressive audio unit, acts as the user interface for a Bluetooth® compatible mobile phone, and as the display for the Lexus Park Assist system.

As you reverse out of your parking spot, the Rear View Camera displays a colour image of what's behind you on the EMV screen. As well as easy manoeuvring you will always know exactly what is behind you.

This screen also displays information on the function of the Lexus Hybrid Drive system. The Energy Monitor screen in the GS450h

shows the flow of energy between the petrol engine, electric motor, battery and the rear wheels so you can see the innovative hybrid system in action. Comprehensive fuel consumption information is also available at a touch of the screen.

In the Lexus GS, pure comfort and the perfect driving position are always at your fingertips. An advanced memory system allows for driver and front passenger seat slide, recline, height, tilt, and lumbar support adjustment and will conveniently recall your preferred seating, external mirror and steering wheel positions using one of three memory settings. What's more, different memory settings are automatically recalled depending on which key is used to unlock the vehicle.

For further comfort the driver and front passenger seats in all GS models have seat heaters while the GS300 Limited, GS460 and GS450h also feature seat coolers so no matter the weather you



SANCTUARY

To keep important controls at your fingertips, the steering wheel of the GS features audio, multi-information display, Bluetooth® and voice recognition operations. Also located on the steering column is access to the cruise control function.

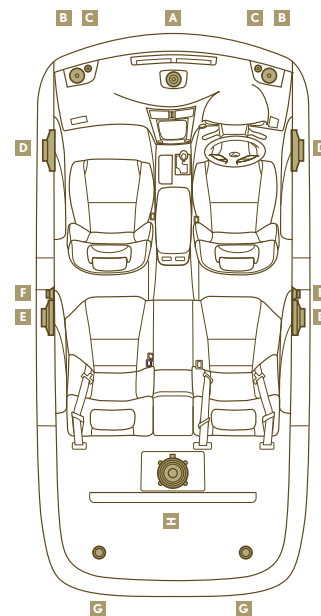
Thanks to advanced sound-proofing measures and the quiet operation of the GS, the interior of this vehicle represents a pure platform upon which to introduce your own personal style of music.

The Lexus Premium Sound System in GS300 offers 134 Watts via 10 speakers, a Dolby cassette deck, full in-dash 6-CD changer with MP3/WMA compatibility, and the clever Automatic Sound Leveliser (ASL) system. To compensate for variations in ambient sound (such as noise caused by an open window or traffic) the ASL system automatically raises the audio volume to maintain pre-set levels regardless of the level of external interference before lowering the sound again when the interference is gone.

In pursuit of the perfect sound and to please even the most discerning audiophile, Lexus has teamed up with Mark Levinson to provide the Mark Levinson Premium Surround Sound System for GS300 Limited, GS460 and GS450h models. This 14-speaker system offers an AM/FM tuner, cassette deck, in-dash 6-CD/DVD changer with MP3/WMA capability, and thanks to the Mark Levinson Power Amplifier, a full 330 Watts of pure,

uncoloured sound. Adding to this impressive audio package is the ability to watch DVD movies via the EMV screen when the vehicle is stationary.

To ensure you never get lost, Lexus Satellite Navigation is standard for GS300 Limited, GS460 and GS450h. Being DVD based, it offers faster recall of electronic maps than CD-based systems via a high resolution in-dash LCD touch screen display. The three most efficient routes to your destination are displayed on this Electro Multi Vision (EMV) screen faster than you can unfold a paper map. Plus, voice commands guide you to your destination like a personal navigator, to make getting lost a thing of the past.



The Mark Levinson audio system has 14 speakers strategically located in the cabin area.

- A** 1 x 63.5mm metal cone midrange centre channel speaker in instrument panel
- B** 2 x 63.5mm metal cone midranges in instrument panel
- C** 2 x 25mm titanium tweeters in instrument panel
- D** 2 x 165mm woofers in front doors **E** 2 x 165mm woofers in rear doors
- F** 2 x 25mm tweeters in rear doors **G** 2 x 63.5mm metal cone midranges on the rear deck **H** 1 x 250mm cast basket subwoofer in the rear deck.

Delivering pure sound to the speakers is an 11 channel digital processor/power amplifier located in the luggage compartment.

mark
levinson
PREMIUM SURROUND SYSTEM



GS450h shown

INTELLIGENT PROTECTION

The GS has a state-of-the-art airbag system with 12 airbags designed to keep the driver and passengers protected no matter the circumstances.

The front airbags are sensor-controlled to assess the driver's seat-slide position, the intensity of impact and whether or not seatbelts are fastened. They have dual-stage inflation to help reduce the chance of impact injuries.

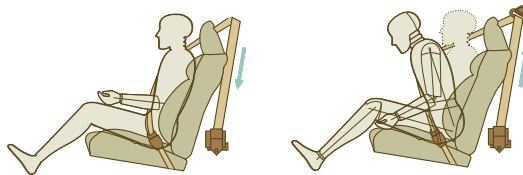
Protecting occupants in the event of a side collision are the front and rear side and front/rear curtain shield airbags. They provide valuable protection against injury from interior fittings and reduce the threat of injury from external factors such as power poles and other vehicles. The curtain shield airbags may be activated alone, or in conjunction with the side airbags depending on the nature of the impact.

Mid-to-lower leg protection is often overlooked. But not at Lexus. The GS protects this important area with driver and front passenger knee airbags.

The GS450h airbag system is connected to a high-voltage relay breaker which, in the event of a collision, recognises that the airbags have been triggered and automatically shuts down the high-voltage hybrid power supply.

Pre-tensioners and force limiters for the front and outer rear seatbelts add an extra margin of safety in frontal collisions.

For added protection, the seatbelts in GS300 Limited, GS460 and GS450h are linked with a pre-crash system that will automatically retract in anticipation of a collision. For younger travellers, child restraints can be secured in the rear with three tether anchors and two ISO fixing points.



The front and outer rear seat belts have pre-tensioners and force limiters to further reduce potential injury.



GS300





GS450h

GS450h - A NEW LIFE FORCE

**LEXUS
HYBRID
DRIVE**

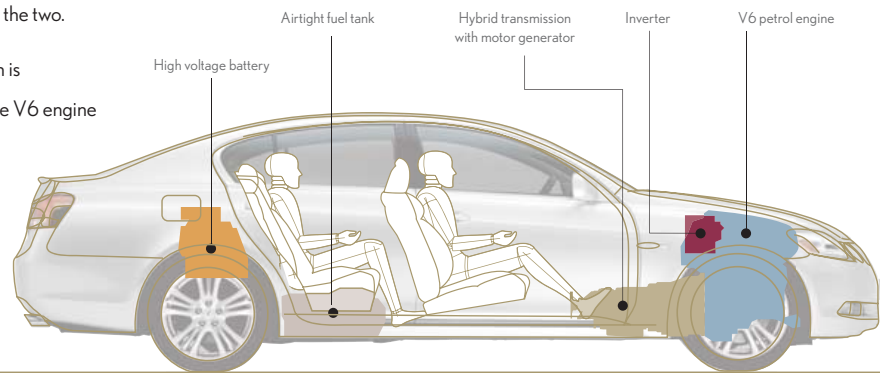
It is a long held perception that if a car delivers high performance, it can not provide great fuel economy. Conversely, a 'clean' vehicle can not perform consistently. Lexus has changed the rules using our own carefully designed hybrid technology. The GS450h is the world's first performance luxury hybrid sedan, and sets the scene for a whole new playing field and a new world of driving performance.

Bringing the GS450h to life is a technology that is not only powerful and undoubtedly efficient, but which is also intelligent. At the heart of hybrid technology is an innovative system called Lexus Hybrid Drive. This new power player is driven by a petrol engine and an electric motor, both of which work to deliver smooth power and responsiveness. This sophisticated system continuously monitors driving patterns for optimum performance, fuel efficiency and emissions at all speeds by running either the electric motor, the petrol engine, or a combination of the two.

With two forces driving the rear wheels, the GS450h is supremely energetic. The car is powered by a 3.5 litre V6 engine

with an innovative dual-injection system that boosts efficiency and pulling power across the rev range. With the additional support of the sophisticated high-voltage motor, the result is V8-like performance. In fact, the GS450h can deliver up to 253kW of power for seamless acceleration.

The GS450h is astoundingly quiet. When stationary the car is virtually silent and at low speeds may be powered only by the electric motor. As you gain speed, petrol engine power is applied smoothly and, thanks to the intrinsic dynamics of all Lexus vehicles, a reassuring sense of balance and composure is retained under even the most challenging circumstances.



LEXUS PERFORMANCE HYBRID

The GS450h features the world's first performance hybrid system with a front-mounted engine and rear-wheel drive. This system offers an extremely quiet ride and a new sense of driving performance while reducing its impact on the environment.

The transmission of the GS450h consists of a power split device, a generator, an electric motor and reduction gears. The power split device divides the petrol engine's energy into two separate paths. One delivers power to the final reduction gear and then the driving wheels, while the other generates electrical energy to be stored in the battery and drive the electric motor. The power split device is electronically controlled, and also functions as an Electronic Continuously Variable Transmission (ECVT).

When the GS450h is first started, or is operating under a light load, the petrol engine is stopped and only the electric motor is used. This allows for a smooth and quiet start and for initial acceleration. In normal driving situations, both the 3.5 litre V6 petrol engine and the electric motor may be used to drive the vehicle. However, this power may also be partially directed to the hybrid system's generator to ensure high and reliable levels of battery voltage. Under full acceleration or when overtaking, the petrol engine is supported by the high speed compact electric motor that also receives electrical energy from the hybrid battery.

When decelerating, the rear wheels drive the electric motor which in turn acts as a generator to convert the vehicle's kinetic energy into electricity. This recycled energy is then used to charge the vehicle's battery. Because the battery is recharged by both the petrol engine and by the energy recovered when decelerating, the hybrid battery will never require external recharging.

The petrol engine in GS450h benefits from dual VVT-i (Variable Valve Timing - intelligent), which helps the engine to breathe with maximum efficiency, and from a dual injection system with both direct and port injectors for optimum power. These systems vary the amount of fuel and air needed to suit the conditions to enhance fuel economy and reduce emissions. Using sensors, the battery monitoring system helps to ensure that the voltage, current and temperature of the hybrid battery are kept at optimum levels.



During regenerative braking.

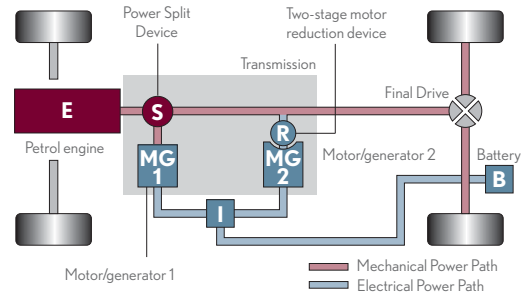


During normal driving.



GS450h Hybrid System

LEXUS
HYBRID
DRIVE



1 High power, clean running V6 petrol engine

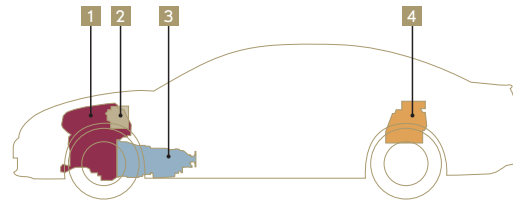
2 Compact high output inverter

Converts and boosts voltage of the hybrid system and provides overall control.

3 Hybrid transmission

Featuring an Electronic Continuously Variable Transmission (ECVT) and a two-stage reduction device.

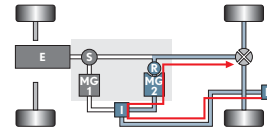
4 Compact high output Ni-MH battery



Operating modes

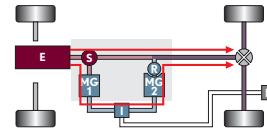
1 Startup

When starting off under a light load, the vehicle is generally powered only by its high-output electric motor.



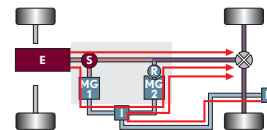
2 Normal driving

During normal driving the petrol engine starts. Engine power is divided into two paths: one drives the electric generator to produce electricity and another drives the wheels. The engine is controlled to maintain the optimal balance between power, fuel consumption and emissions. Minimising engine use also contributes to quietness.



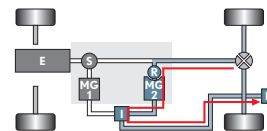
3 Full throttle acceleration

During full acceleration, electric power is also supplied to the electric motor by the battery. Adding drive from the high output electric motor to the power from the engine provides instant and exhilarating response and a seamless sense of continual acceleration unique to GS450h.

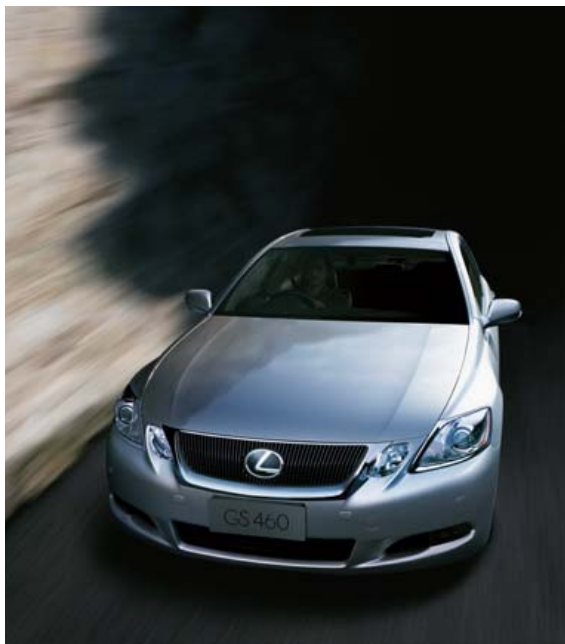


4 Deceleration

When decelerating the wheels drive the electric motor which acts as a generator to convert the vehicle's kinetic energy into electric power that recharges the battery.



LEXUS CARE



LEXUS WARRANTY

An important part of the peace of mind that comes with owning a Lexus is the built-in warranty on your vehicle. Each Lexus vehicle carries a manufacturer's New Vehicle Warranty of 3 years or 100,000 kilometres*. This is supplemented by Lexus New Zealand's Lexus Care Warranty which consists of an additional 1 year or 40,000 kilometres* cover. This total package of cover is offered to the first owner and subsequent owners within a 4 year or 140,000 kilometre* period and is supplemented by a 6 year corrosion perforation warranty. In addition the GS450h hybrid battery is warranted for 8 years or 160,000 kilometres* from the date of first registration.

LEXUS SERVICE PLAN

The Lexus Full Maintenance Service Plan that accompanies every new Lexus covers all parts and labour costs associated with the Lexus recommended service schedule for a period of 4 years or 140,000 kilometres* from the date of first registration and may include a replacement set of four tyres if required. It combines an exacting standard of maintenance with a high level of customer convenience and ensures your Lexus is serviced, as it should be – by specially trained Lexus technicians. * whichever occurs first under normal operating conditions.

LEXUS OF NORTH SHORE

Corner of Link Drive and Target Road
Wairau Park, NORTH SHORE CITY
P O Box 100550, NORTH SHORE MAIL CENTRE,
NORTH SHORE CITY
Phone: 09 442-3670

LEXUS OF AUCKLAND CITY

101 Great North Road, Grey Lynn, AUCKLAND
P O Box 8947, Symonds Street, AUCKLAND
Phone: 09 523-1841

LEXUS ON CALL

With Lexus On Call we've made sure the service that makes Lexus unique will always be as close as your phone or computer. This way, you can summon assistance whenever required. In the event of an emergency or breakdown we like to take special care of you and your Lexus. Your comments are also important to us, so you're most welcome to contact us anytime and talk to us about your Lexus experience.

Lexus On Call is your direct link to Lexus support.

Freephone - 0800 4 LEXUS (0800 453 987) - 24 hours

Web - www.lexus.co.nz

Email - oncall@lexus.co.nz

LEXUS PLUS

We know that a helping hand can be invaluable in an emergency. Lexus Plus, in conjunction with the New Zealand Automobile Association (AA), provides a special nationwide emergency service for Lexus owners. The Lexus Plus programme provides extended protection against the possibility of being stranded away from home because of a vehicle breakdown. It gives you constant access to immediate help 24 hours a day, seven days a week.

Lexus Plus offers a wide range of services whether you require roadside assistance to recover your vehicle, emergency windscreen replacement, alternative transport home or even assistance with changing travel plans if you are unexpectedly delayed. Lexus will also arrange any accommodation and rental car requirements that may arise if breakdown repairs cannot be completed on the day of the emergency. The service even extends to transporting replacement clothing to you, or to passing on urgent messages to family, friends or colleagues.

LEXUS FINANCIAL SERVICES

There is an extensive range of tailored finance solutions available through your Lexus dealer designed to make acquiring a Lexus as effortless as driving one. Whether you require a fleet or personal finance plan, there are a wide range of options for leasing or purchasing a vehicle to suit your individual needs.



LEXUS OF HAWKE'S BAY

505 North Karamu Road, HASTINGS

P O Box 165, NAPIER

Free Phone: 0800 425-3987 (0800 HB LEXUS)

Phone: 06 872-8222

LEXUS OF WELLINGTON

54 Kent Terrace, WELLINGTON

P O Box 9541, Marion Square, WELLINGTON

Phone: 04 802-0610

For further dealer information visit:

www.lexus.co.nz/mylexusdealer

LEXUS OF CHRISTCHURCH

227 Montreal Street, CHRISTCHURCH

P O Box 22482, High Street, CHRISTCHURCH

Free Phone: 0800 466-453

Phone: 03 363-8748

For service agents throughout New Zealand visit:

www.lexus.co.nz/partsandservice

GS SPECIFICATIONS

FACTS & FIGURES:

Overall length:	4850mm
Overall width:	1820mm
Overall height:	1430mm
Wheelbase:	2850mm
Minimum ground clearance:	135mm
Gross vehicle weight (GS300):	2125kg
Gross vehicle weight (GS460):	2160kg
Gross vehicle weight (GS450h):	2355kg
Kerb weight (GS300):	1620kg
Kerb weight (GS460):	1735kg
Kerb weight (GS450h):	1865-1930kg
Towing capacity braked (GS300):	1700kg
Towing capacity braked (GS460):	2000kg
Towing capacity unbraked (GS300/GS460):	750kg
Towing capacity (GS450h):	not rated for towing

MECHANICAL FEATURES:

	GS300	GS300 LTD	GS460	GS450h
3.0 litre quad cam 24 valve V6 petrol engine with dual VVT-i develops 183kW of power @ 6200rpm and 312Nm of torque @ 3600rpm.	•	•		
4.6 litre quad cam 32 valve V8 petrol engine with dual VVT-i develops 255kW of power @ 6400rpm and 460Nm of torque @ 4100rpm.			•	
3.5 litre quad cam 24 valve V6 petrol engine with dual VVT-i develops 218kW of power @ 6400rpm and 368Nm of torque @ 4800rpm.				•
Motor Generator 1 - Permanent Magnet Synchronous A/C Motor functions as Generator and Engine Starter. Maximum System Voltage is DC 650 V. Water-cooled.				•
Motor Generator 2 - Permanent Magnet Motor functions as Generator and Drives Rear Wheels. Maximum System Voltage DC 650 V. Maximum Power 147kW @ 5615-13000 rpm. Maximum Torque 275 Nm @ 0~3840 rpm.				•
Total System Output (Petrol Engine & Electric Motor) Maximum Power 253kW.				•
95 octane is recommended. Tank capacity is 71 litres (65 litres for GS450h).	•	•	•	•
Fuel consumption (L/100km) / CO2 Emissions (g/km)* - ADR81/01 combined cycle.	9.8/232	9.8/232	11.0/258	7.9/186
6-speed Electronically Controlled automatic Transmission (Super ECT) with lock-up torque converter, Artificial Intelligence (AI) and sequential manual mode.	•	•		
8-speed Electronically Controlled automatic Transmission (ECT) with lock-up torque converter, Artificial Intelligence (AI), Driving Response and Acceleration Management System (DRAMS), neutral mode and sequential manual mode.			•	
Electronic Continuously Variable Transmission (ECVT) with sequential shift programming.				•
Fully independent double wishbone front and rear suspension with stabiliser bars.	•	•	•	•
Adaptable Variable Suspension (AVS).	•	•	•	•
Electronic power steering.	•	•	•	•
Variable Gear Ratio Steering (VGRS).			•	•
Power-assisted ventilated front and rear disc brakes. Anti-lock Braking System (ABS), Electronic Brake Force Distribution (EBD) and Brake Assist (BA). Pedal type mechanical parking brake.	•	•	•	•
Vehicle Stability Control (VSC), Hill-Start Assist Control (HAC) and Traction Control (TRC).	•	•	•	•
Vehicle Dynamics Integrated Management (VDIM).	•	•	•	•
7.5JJ x 17" alloy wheels fitted with 225/50 R17 low profile performance radial tyres.	•			
8.0JJ x 18" alloy wheels fitted with 245/40 R18 low profile performance radial tyres.		•	•	
8.0JJ x 18" alloy wheels fitted with 245/40 R18 low profile performance radial tyres. Temporary type spare tyre.				•

* Fuel consumption and CO2 emissions will vary depending on driving conditions/style, vehicle condition and options/accessories fitted.

FEATURES:	GS300	GS300 LTD	GS460	GS450h
Headlight levelling system; adaptive front-lighting system; headlight cleaners; headlight control system with auto on and off.	•	•	•	•
Rain-sensing windscreen wipers.	•	•	•	•
Smart Key System; remote central door locking with answer back and panic functions; remote boot release with cancel function; engine immobiliser and security alarm.	•	•	•	•
Driver and passenger front, front and rear side, front and rear curtain shield and front knee airbags.	•	•	•	•
Pre-crash safety system.		•	•	•
Leather seats, door trim and headrests; wood centre console, instrument panel, gear lever and door inserts.	•	•	•	•
Driver and front passenger power slide, recline, height, tilt and lumbar adjustment with 3 driver and passenger memory settings and seat heaters.	•			
Driver and front passenger power slide, recline, height, tilt and lumbar adjustment with 3 driver and passenger memory settings; seat heaters and ventilation.		•	•	•
Climate control air conditioning front and rear with separate driver and passenger controls.	•	•	•	•
3-spoke leather steering wheel with audio and multi-function switches; power tilt and telescopic steering with memory; cruise control.	•			
3-spoke leather and wood steering wheel with audio and multi-function switches; power tilt and telescopic steering with memory; radar cruise control.		•	•	•
AM/FM radio cassette with 6 disc MP3/WMA CD changer, 10 speakers, audio input jack and security system; 7" EMV (Electro Multi-Vision) display, trip information, Bluetooth® telephone information, backing monitor, screen set-up, climate control air conditioning, audio functions.	•			
Mark Levinson AM/FM radio cassette with 6 disc MP3/WMA DVD changer, 14 speakers, audio input jack and security system; 7" EMV (Electro Multi-Vision) display with DVD Satellite Navigation, trip information, Bluetooth® telephone information, backing monitor, screen set-up, climate control air conditioning and audio functions.		•	•	•
Optitron instrument panel; multi-information display; outside temperature display.	•	•	•	•
Automatic glare-resistant electro chromatic interior and exterior rear view mirrors with side turn indicator lights, heater and memory settings.	•	•	•	•
Electric rear window sunshade.		•	•	•
Park assist system with reversing camera and sensors.	•	•	•	•
Rear spoiler.		•	•	•
Electric boot closing system.	•	•	•	•

OPTIONAL EQUIPMENT:

Power glass sunroof.	•	•	•	•
----------------------	---	---	---	---

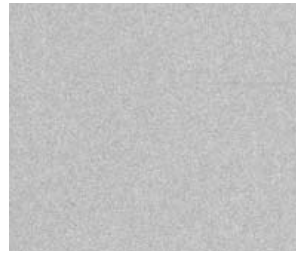
EXTERIOR COLOURS



077 White Pearl Crystal Shine



1G5 Starfire Pearl Mica



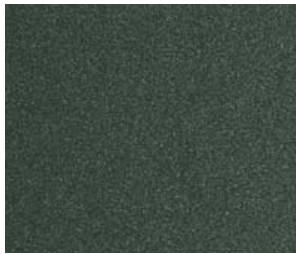
1F2 Platinum Metallic



8T9 Twilight



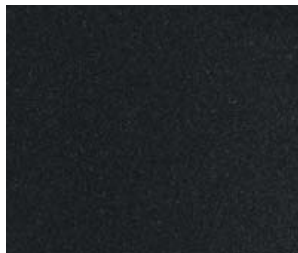
4T1 Metallic Beige Metallic



6V0 Jade Metallic



3R1 Burgundy Crystal Shine



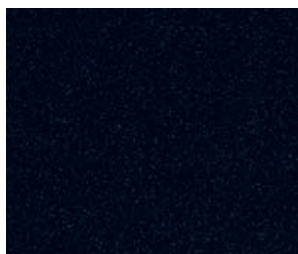
1G0 Graphite Mica



8U0 Sapphire Mica Clear Colour

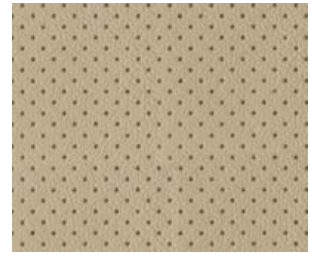


212 Onyx



214 Elysium Black Mica GS450h only

INTERIOR COLOURS



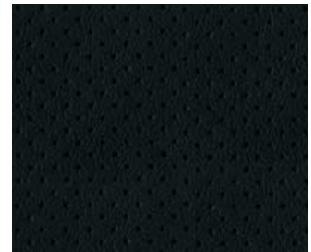
00 Ivory

Ivory leather interior with dark orchid surrounds and bird's eye maple woodgrain trim.



10 Light Grey

Grey leather interior with black cabin surrounds and grey bird's eye maple woodgrain trim.



20 Black

Black leather interior with black cabin surrounds and deep wine-red walnut woodgrain trim.



Every endeavour has been made to ensure text details and specifications contained in this publication were accurate as at 5 November 2007.

Lexus New Zealand reserves the right at any time to introduce any changes deemed necessary to improve the models shown or for any other reason. Paint and upholstery colours shown in this brochure may differ from actual colours due to variations in printing processes. Some models shown in this brochure may have optional accessories fitted.

For further information contact your nearest Authorised Lexus Dealer. They will be glad to assist. 450 • LEXUSGS4 • November 2007.

