



The IS line







THE NEXT LEVEL OF PERFORMANCE BEGINS.

The quest to build the very first Lexus began as one to passionately fulfil seemingly exclusive goals. To create cars with impeccable standards of luxury. Yet at the same time, engineers sought to achieve levels of performance to rival some of the best sports cars of the day.

Attention to detail has always been a key ingredient for Lexus' success. Just as in motorsport, where greater engineering precision separates winners from losers, so too on the street attention to detail distinguishes car marques. In the very first Lexus, timberwork for each vehicle was sourced from a single tree. Keeping with that philosophy, the console of today's IS250 Limited is crafted from parts of a single piece of timber.

For Lexus, there has always been a greater focus. Driver experience was placed above satisfying the indulgences of

the engineer. Relentless testing in wind tunnels helped hone bodylines whilst also creating quieter interiors. Testing on high speed autobahns fine-tuned cars destined for roads that do have limits.

With the release of the IS250, the Lexus spirit is reaffirmed in cars that not only hold the road, but grip the emotions. The wishes of its Chief Engineer, whose past is deeply rooted in motorsport, come vividly to life the moment you press the starter to fire the engine. Then as the car's engineering precision meshes with the driver's passion, both seemingly function as one to deliver a singular motoring experience.

EXTERIOR DESIGN THAT PURSUES A NEW ROUTE.

The immediate visual impression of the IS250 is of a car that appears in a constant state of motion. To achieve such styling, Lexus designers didn't stand still either. Rather than follow existing trends, Lexus is creating its own design language charged with a new emotion.

Bold, confident bodylines distinguish the IS250. The front bumper line stoops down as if to scoop cooling air for the engine, while the grille affirms a broad stance, signalling that the IS250 is much longer and wider than the previous Lexus IS. Like a finely tailored suit, this body is crafted with typical Lexus precision. More precise panel alignment helps to achieve a flowing, almost seamless look.

Powerful headlights pierce the darkness as the body design slices the wind. An assertive look of action is portrayed by the muscularly sculpted aluminium bonnet which reduces weight and assists the low centre of gravity. Even the underbody contributes to roadholding. Strategically placed steps in the

front air dam lead to a near flat floor, improving stability at high speeds.

IS250 Elect's powerful Halogen headlights will turn heads, while the High Intensity Discharge (HID) headlights on Sport and Limited models also turn corners. Sport and Limited models are equipped with headlight cleaners to ensure clear night vision and automatic rain sensing wipers. LED tail lights and number plate lamps distinguish a uniquely Lexus rear end treatment.

Such a spirited design precedes a driving experience where you become as one with the car. With the Smart Key in your pocket you become aware of this sense of connection the moment you step towards the IS250 when it welcomes you with its illuminated entry system. With this key you can unlock the driver's door simply by gripping the handle, and once inside starting the car is merely the touch of a button. Then, your journey into the future of performance motoring begins.



CONNECTING YOU WITH THE JOURNEY AHEAD.

At any time you are closely linked with your car through highly advanced instrumentation and controls that inform you of prevailing driving conditions. The Optitron meters and three dimensional LED instrumentation add a distinctive look.

The tachometer display changes colour according to engine RPM, alerting you as revs climb beyond your pre-designated limits. You can turn on, or off, certain information via a satellite switch, letting you focus on precisely what you want.

The leather-clad steering wheel is ergonomically shaped to fit your hands. Electronic power steering offers optimal manoeuvring in tight parking spots, then tailors assistance for greater road feel at higher speeds. Automatic models allow shifting via the gear lever and sequential gate. Alternatively, you can change the 6 gears via Formula-1 inspired 'paddles' on the steering wheel so as you negotiate twisty coastal highways, you can assert control with your fingertips. In the manual version of the IS250 Elect, its low first gear stimulates acceleration, while the gear lever with its crisp, short throws is aptly suited to focussed motoring.

The Lexus audio system incorporates 13 strategically positioned speakers. It is compatible with MP3 and WMA files and lets you plug in your MP3 player.

An optional sound system created by leading audiophile designer Mark Levinson is available.

This 6 disc DVD changer delivers scintillating sight and sound through 14 speakers that will out perform many home audio systems.

This optional audio system is linked to a DVD-based Satellite Navigation system designed to make your life simpler. Visual maps and spoken commands guide you to your destination, making paper maps a thing of the past. It offers enhanced precision, pinpointing your location with impressive accuracy.

With this advanced system you can also register your Bluetooth® compatible mobile with the inbuilt system for hands free communication. Call functions are right at your fingertips via the EMV (Electro Multi Vision) screen, letting you search the phone book, register and receive calls.

mark
levinson
PREMIUM SURROUND SYSTEM





Optional
Satellite Navigation
package shown





IS250 Limited



IS250 Limited



COMFORTS THAT STIR THE EMOTIONS.

Lexus designers employed new modelling techniques to create a feeling of spaciousness that defies the cabin's compact dimensions. Here you'll find the IS250 Elect and Limited have impeccable leather creating a sumptuous interior. Not content with conventional stitching, stylists insisted on a technique which hides needle penetration holes for neater seams.

In the IS250 Sport, the Sellensia material helps keep you firmly fixed in your seat on twisty roads. Front seats in the IS250 Sport are heated, while the IS250 Limited offers additional cool air ventilation for year round comfort.

In addition, rear seat passengers in IS250 Limited are shielded from harsh sunlight with a rear window power sunshade.

Lexus has always been known to go to extraordinary lengths. So when it came to the console timberwork in the IS250 Limited, all three sections are crafted from the same piece of timber. These components are first numbered, crafted by three individual craftsmen, then reunited in the one vehicle, ensuring continuity of grain and colour.



ADVANCED SAFETY SYSTEMS

The IS250's advanced technology extends to systems designed to help protect you and your passengers. Behind the grille on the IS250 Limited is a radar sensor that performs two functions. When the Active Cruise Control is activated, the radar monitors the road ahead. If the system detects another vehicle in your path, it decelerates your car and applies brakes if necessary to maintain a safe following distance. Your speed is then resumed once that vehicle has moved away.

The radar sensor is also integral to the Pre-Crash System (PCS). If this system perceives that a crash is imminent, it tightens the seatbelts to help restrain the driver and front passenger. It also readies the Brake Assist system to supplement your braking effort.

Traction Control helps rein in wheelspin for more controlled acceleration. While cornering, Vehicle Stability Control (VSC), fitted as standard on all models, helps maintain your chosen line around slippery bends.

All IS250 models also have an SRS airbag package which includes 2-stage front driver and passenger airbags, front side and front and rear curtain shield airbags. A first for Lexus is the dual chamber front passenger airbag which was designed to disperse the physical impact of the airbag on the passenger following deployment. In addition, driver and passenger knee airbags help reduce damage to the lower limbs during a collision.

On Sport and Limited models, parking sensors allow you to gauge the distance between your car and any hazardous objects. Vehicles equipped with the optional Satellite Navigation package also have a reversing camera so you can see what is behind you, along with a Rear Guide Assist system that gives you a more precise indication of distances when reversing.





Overseas model shown





REKINDLE YOUR PASSION FOR DRIVING.

Performance is sparked by an entirely new 2.5 litre V6 Direct Injection engine. This high output, quad cam engine is made of die-cast aluminium for weight reduction and optimum heat transfer. Direct injection helps optimise combustion and power for greater efficiency and reduced emissions. A much higher compression ratio boosts power output, yet assists in achieving good fuel economy.

It also leverages lessons learned in world motorsport. Roller rockers reduce friction, while intake valve diameters have been made as large as possible for better breathing. VVT-i on the intake and exhaust tunes valve timing according to RPM and a dual exhaust system with twin mufflers reduces backpressure for better engine respiration. Like the world's great performance cars, the IS250 is rear wheel drive.

A sophisticated multilink rear suspension reflects the Chief Engineer's motorsport pursuits and enhances agility and grip. The advanced-design aluminium suspension carrier reduces weight, while double link upper suspension arms optimise suspension geometry for greater response on uneven roads. Anti-lift and anti-squat geometry maintain the car's composure during acceleration and braking. Road undulations are damped by monotube shock absorbers delivering a linear handling response to help maintain wheel contact with the road.

Suspension in the IS250 Sport has been optimised for performance driving. Firmer settings and camber adjustments ensure flatter cornering, yet still deliver the comfort levels you expect in a Lexus.

LEXUS CARE



LEXUS WARRANTY

An important part of the peace of mind that comes with owning a Lexus is the built-in warranty on your vehicle. Each Lexus vehicle carries a manufacturer's New Vehicle Warranty of 3 years or 100,000 kilometres*. This is supplemented by Lexus New Zealand's Lexus Care Warranty which consists of an additional 1 year or 40,000 kilometres* cover. This total package of cover is offered to the first owner and subsequent owners within a 4 year or 140,000 kilometre* period and is supplemented by a 6 year corrosion perforation warranty.

LEXUS SERVICE PLAN

The Lexus Full Maintenance Service Plan that accompanies every new Lexus covers all parts and labour costs associated with the Lexus recommended service schedule for a period of 4 years or 140,000 kilometres* from the date of first registration and may include a replacement set of four tyres if required. It combines an exacting standard of maintenance with a high level of customer convenience and ensures your Lexus is serviced, as it should be – by specially trained Lexus technicians. * whichever occurs first under normal operating conditions.

LEXUS ON CALL

With Lexus On Call we've made sure the service that makes Lexus unique will always be as close as your phone or computer. This way, you can summon assistance whenever required. In the event of an emergency or breakdown we like to take special care of you and

LEXUS OF NORTH SHORE

Corner of Link Drive and Target Road
Wairau Park, NORTH SHORE CITY
P O Box 100550, NORTH SHORE MAIL CENTRE,
NORTH SHORE CITY
Phone: 09 442-3670

LEXUS OF AUCKLAND CITY

101 Great North Road, Grey Lynn, AUCKLAND
P O Box 8947, Symonds Street, AUCKLAND
Phone: 09 523-1841

your Lexus. Your comments are also important to us, so you're most welcome to contact us anytime and talk to us about your Lexus experience.

Lexus On Call is your direct link to Lexus support.
Freephone - 0800 4 LEXUS (0800 453 987) - 24 hours
Web - www.lexus.co.nz
Email - oncall@lexus.co.nz

LEXUS PLUS

We know that a helping hand can be invaluable in an emergency. Lexus Plus, in conjunction with the New Zealand Automobile Association (AA), provides a special nationwide emergency service for Lexus owners. The Lexus Plus programme provides extended protection against the possibility of being stranded away from home because of a vehicle breakdown. It gives you constant access to immediate help 24 hours a day, seven days a week.

Lexus Plus offers a wide range of services whether you require roadside assistance to recover your vehicle, emergency windscreen replacement, alternative transport home or even assistance with changing travel plans if you are unexpectedly delayed. Lexus will also arrange any accommodation and rental car requirements that may arise if breakdown repairs cannot be completed on the day of the emergency. The service even extends to transporting replacement clothing to you, or to passing on urgent messages to family, friends or colleagues.

LEXUS FINANCIAL SERVICES

There is an extensive range of tailored finance solutions available through your Lexus dealer designed to make acquiring a Lexus as effortless as driving one. Whether you require a fleet or personal finance plan, there are a wide range of options for leasing or purchasing a vehicle to suit your individual needs.



LEXUS OF HAWKE'S BAY
505 North Karamu Road, HASTINGS
P O Box 165, NAPIER
Free Phone: 0800 425-3987 (0800 HB LEXUS)
Phone: 06 872-8222

LEXUS OF WELLINGTON
54 Kent Terrace, WELLINGTON
P O Box 9541, Marion Square, WELLINGTON
Phone: 04 802-0610

For further dealer information visit:
www.lexus.co.nz/mylexusdealer

LEXUS OF CHRISTCHURCH
227 Montreal Street, CHRISTCHURCH
P O Box 22482, High Street, CHRISTCHURCH
Free Phone: 0800 466-453
Phone: 03 363-8748

For service agents throughout New Zealand visit:
www.lexus.co.nz/partsandservice

SPECIFICATIONS IS250 ELECT / IS250 SPORT / IS250 LIMITED

FACTS & FIGURES:

Overall length:	4575mm
Overall width:	1800mm
Overall height:	1425mm
Wheelbase:	2730mm
Minimum ground clearance:	Sport 125mm, Elect and Limited 135mm
Gross vehicle weight - manual/auto:	2055/2045kg
Kerb weight - manual/auto:	1635/1625kg
Towing capacity braked:	1500kg
Towing capacity unbraked:	560kg

MECHANICAL FEATURES:

	IS250 ELECT	IS250 SPORT	IS250 LIMITED
2.5 litre quad cam 24 valve V6 engine with dual VVT-i develops 153kW of power @ 6400rpm and 252Nm of torque @ 4800rpm.	•	•	•
95 octane is recommended. Tank capacity is 65 litres.	•	•	•
Fully independent double wishbone front and multi-link rear suspension with stabiliser bar.	•	•	•
Electronic power steering.	•	•	•
Power-assisted ventilated front and solid rear disc brakes. Anti-lock Braking System (ABS), Electronic Brake-force Distribution (EBD) and Brake Assist (BA). Pedal type mechanical parking brake (auto models), lever type parking brake (manual models).	•	•	•
Vehicle Stability Control (VSC) and Traction Control (TRC).	•	•	•
Hill Start Assist Control (HAC) - auto only.	•	•	•
6-speed Electronically Controlled Automatic Transmission (Super ECT) with lock-up torque converter, Artificial Intelligence (AI), grade logic, snow and power modes. Sequential manual operation with paddle shift controls.	•	•	•
6-speed close ratio manual transmission.	•		
8.0J x 17" front alloy wheels fitted with 225/45 R17 steel belted radial ply tyres; 8.0J x 17" rear alloy wheels fitted with 245/45 R17 steel belted radial ply tyres. Temporary type spare tyre.	•		
8.0J x 18" front alloy wheels fitted with 225/40 R18 steel belted radial ply tyres; 8.5J x 18" rear alloy wheels fitted with 255/40 R18 steel belted radial ply tyres. Temporary type spare tyre.		•	•

FEATURES:

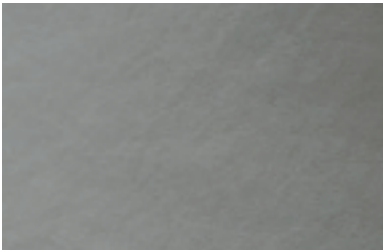
	IS250 ELECT	IS250 SPORT	IS250 LIMITED
Halogen headlights with manual levelling and auto on/off.	•		
Adaptive Front-lighting System; HID headlights with auto on and off; headlight cleaners.		•	•
Rain sensing windscreen wipers.		•	•
Smart Key System; remote central door locking with answer back and panic functions; remote boot release with manual lock-out function; engine immobiliser and security alarm.	•	•	•
Illuminated entry system.	•	•	•
Driver and passenger front, front side, front and rear curtain shield and front knee airbags.	•	•	•
Pre-crash safety system.			•
Leather seats and headrests, leather door trim and gear lever; power lumbar support adjustment; metallic style centre console and instrument panel.	•		
Sellensia fabric seats, headrests and door trim; power lumbar support adjustment, driver and passenger memory setting, front seat heaters, metallic style centre console and instrument panel, leather gear lever.		•	
Semi-aniline leather seats, leather headrests and door trim; front seat heaters and seat air-conditioning; wood centre console and instrument panel; leather gear lever.			•
Driver and front passenger power slide, recline, height, tilt and lumbar adjustment.	•		
Driver and front passenger power slide, recline, height, tilt and lumbar adjustment with 3 driver and passenger memory settings.		•	•
Climate control air conditioning with independent driver and passenger controls.	•	•	•
3-spoke leather steering wheel with audio and multi-information display controls; manual tilt and telescopic steering, cruise control.	•		
3-spoke leather steering wheel with audio and multi-information display controls; power tilt and telescopic steering with memory; cruise control.		•	
3-spoke leather steering wheel with audio and multi-information display controls; power tilt and telescopic steering with memory; radar cruise control.			•
Lexus Audio - AM/FM radio with 6 disc MP3/WMA CD changer with auxiliary input jack and 13 speakers.	•	•	•
Optitron instrument panel; outside temperature display.	•	•	•
Day/night interior rear view mirror.	•		
Automatic glare-resistant electrochromic interior and exterior rear view mirrors.		•	•
Electric rear window sunshade.			•
Park assist system.		•	•
OPTIONAL EQUIPMENT:			
Power glass sunroof.	•	•	•
Satellite Navigation System, Mark Levinson Premium Audio - AM/FM radio with 6 disc in-dash MP3/WMA DVD changer, auxiliary input jack and 14 speakers. Bluetooth® handsfree phone capability, reversing monitor and camera.	•	•	•
Radar Cruise Control and Pre-Crash System.		•	

INTERIOR COLOURS

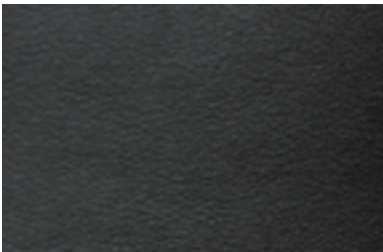
LEATHER TRIM - ELECT



04 Ivory

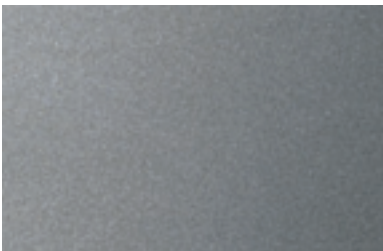


11 Frosty Grey



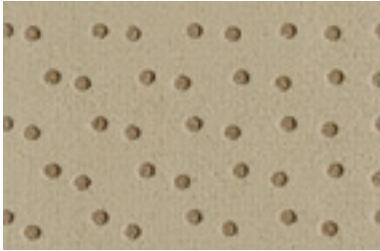
27 Black

INTERIOR TRIM

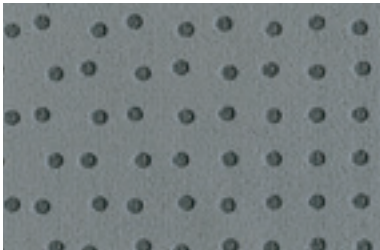


Metallic trim

SELLENSIA TRIM - SPORT



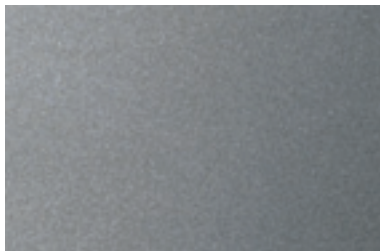
04 Ivory



11 Frosty Grey



27 Black

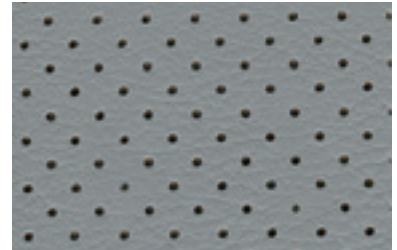


Metallic trim

LEATHER TRIM - LIMITED



04 Ivory



11 Frosty Grey



27 Black



Burr Maple trim

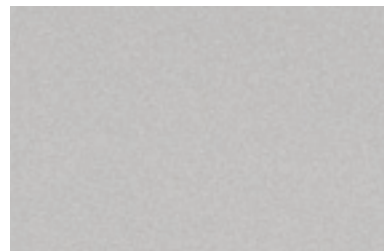
EXTERIOR COLOURS



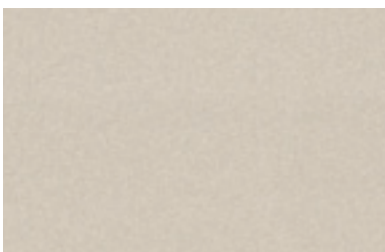
077 White Pearl Crystal Shine



074 Bluish Pearl Crystal Shine



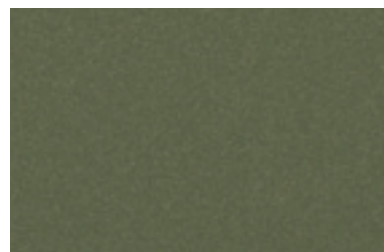
1G1 Silver Mica Metallic



4T1 Beige Metallic



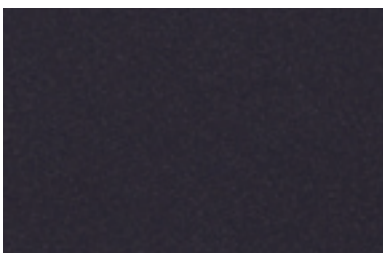
3R1 Red Mica Crystal Shine



6U3 Medium Green Mica Metallic



8R6 Light Blue Metallic



1G0 Dark Grey Mica



8U0 Dark Blue Mica Clear Colour



212 Black

Every endeavour has been made to ensure text details and specifications contained in this publication were accurate as at 25 September 2007. Lexus New Zealand reserves the right at any time to introduce any changes deemed necessary to improve the models shown or for any other reason. Paint and upholstery colours shown in this brochure may differ from actual colours due to variations in printing processes. Some models shown in this brochure may have optional accessories fitted. For further information contact your nearest Authorised Lexus Dealer. They will be glad to assist.

1,000 • LEXUS IS5 • September 2007