



The RX line



Ascending to a new peak

When Lexus set about creating a new paradigm in luxury motoring, the world was a very different place. Most owners were satisfied with the status quo. Performance was never considered a pre-requisite for a luxury vehicle and styling was driven more by visible opulence, than elegance. And environmental concerns were barely being seen on the horizon.

Yet 2300 engineers and 1400 technicians thought differently. Lexus listened to discerning luxury vehicle owners and discovered that they wanted something better. They wanted to create a vehicle that was more passionate, refined and that slotted in harmoniously with their changing lives in an ever changing world.

So Lexus set out on a pioneering quest that began on the California Coast. Design teams journeyed from Rodeo Drive to race tracks; from country clubs to deserts; to better understand the design parameters for an entirely new breed of luxury vehicle. What they discovered related as much to

emotion as engineering. They observed that the evolving taste of the luxury consumer was becoming essentially European, only warmer and brighter. Also, most owners actually enjoyed driving, regarding it as a source of stimulation rather than merely transportation.

Then an exhaustive development process began. When the first prototypes were built, they were put through their paces on race tracks and autobahns, as well as undulating forest trails. They were left exposed to the heat of the Australian outback and tested in the icy cold of Shibetsu, a ski resort on the island of Hokkaido. In total these prototypes were driven 4.3 million test kilometres, then the vehicle that emerged, the Lexus LS400, was launched to the world's press on the autobahn in Germany. Shortly after its launch the LS400 was named Imported Car of the Year by the US motoring press and later was awarded *Wheels Magazine's* Car of the Decade. Lexus had established a new benchmark in prestige motoring and the luxury vehicle market would never be the same again.



THE VISION: "Only by anticipating the needs of our customers will we truly be able to help them make the most of every moment." TAKESHI YOSHIDA, MANAGING OFFICER, LEXUS.

A design movement that moves you

As you run your eyes over the flowing lines of the RX350, you realise Lexus designers have taken the SUV away from its rectangular origins into fresh new territory.

Enroute, they developed a design language unique to Lexus.

This design discipline known as 'L-finesse' charts its own design trends. Confident but not contrived, the exterior look is spearheaded by a sunken grille and chiselled headlights.

The plated upper edges of the grille assert a crisp look, while the lower apexes feature the arrowhead design that typifies the Lexus L-finesse styling treatment.

The bonnet line flows seamlessly from the striking grille design, leading to elegant curves that lead back across the roof. Sleek lines flow down the sides creating a smooth profile quite unlike conventional SUV design. Then in the rear, the crisp geometric form is bounded by a spoiler which helps redirect airflow and a rear wiper which together help maintain driver visibility.

Easy on the eye, the RX350 slips just as easily through the wind contributing to its impressive fuel economy. Yet incorporated within such a smart body are some intelligent technology features including a power rear door. It can be opened or closed at the touch of a button from the driver's seat or the key and can also be closed using the button located on the door itself. It's a considerate feature when you need to quickly load the vehicle in the rain, yet that's not all that lies within the stunning bodywork.





RX350

One vehicle, two luxury levels

RX350

Your smart key allows you keyless entry enabling you to unlock the doors simply by gripping the handle. Once inside, your journey begins at the touch of the start button. The full leather interior includes eight-way power front seats and memory settings for the driver's side. Front seats provide heating for comfort and a nine speaker audio system with six-disc in-dash CD changer keeps you entertained. Beneath you are elegant five-spoke 18" alloy wheels, while roof rails are mounted overhead.

Illuminating the way forward are powerful High Intensity Discharge (HID) headlights with an Adaptive Front-lighting System (AFS) that at slower speeds redirect the powerful low beam headlights around corners. A reversing camera in the rear view mirror ensures safe reversing. A redeveloped Vehicle Dynamics Integrated Management (VDIM) system ensures unparalleled straight line stability and enhanced cornering. For added grip, Active Torque Control AWD intelligently adapts to changing road conditions while Traction Control (TRC) enhances control during acceleration. And to complement these safety measures, a 12 airbag package is fitted as standard.

RX350 Limited

In the RX350 Limited, you ride on elegant seven-spoke 19" alloy wheels. At highway speeds, dynamic radar cruise control helps maintain a safe following distance from vehicles in front utilising a millimetre wave radar sensor built into the front grille.

For added peace of mind, a Pre-Crash safety System (PCS) constantly watches the road and readies the vehicle to optimise restraint and minimise collision impact should the unthinkable occur. When it comes time to park the vehicle, park assist sonars and a reversing camera provide guidance.

Enter the cabin and you will be greeted by an interior design treatment featuring soft, supple leather and wood accents. Setting the Limited model apart is an 8" EMV screen that is home to a 12 speaker audio system with six disc MP3/WMA CD changer.

The satellite navigation system uses the same EMV screen for display with precise control provided by the centre console mounted Lexus Remote Touch. Easy connectivity with the outside world is provided by the Bluetooth telephone capability built into the EMV system. Optional for RX350 Limited is a premium Mark Levinson 15-speaker audio system.

The RX350 Limited has come a long way. How far will you take it?

mark
levinson
PREMIUM SURROUND SYSTEM





RX350 Limited



RX350



RX350 Limited

How you'll feel inside

Once inside you are cocooned in luxurious comfort lavished with soft leather and plush carpet. Here you will find a dramatic departure from the previous RX models, evoking the flowing lines and seamless design of L-finesse.

Seating has been sculpted to support your body yet allows unrestricted arm movement. For a perfect fit with your torso, eight-way power adjustment helps you select your optimum seating position. And should other drivers have adjusted the seat to their unique preferences, a memory switch instantly recalls your chosen seat and mirror settings.

With the smart key or smart key card in your possession, you can start the engine at the touch of a button. A leather clad steering wheel, or leather/woodgrain wheel of the RX350 Limited, provide a sense of control and a look of luxury.

Optitron instrumentation ensures optimum readability in all light conditions, even direct sunlight. RX350 Limited is equipped with an advanced satellite navigation system to provide map guidance. Arguments over directions

become a thing of the past as map and spoken commands guide you efficiently to your destination.

With less unwanted chatter, you'll enjoy the premium sound system all the more. RX350 has a nine speaker surround sound system while RX350 Limited increases its speaker tally to 12. RX350 Limited also has an optional 15 speaker premium Mark Levinson audio system.

Both have a six-disc in-dash CD changer, and being MP3/WMA compatible with an auxiliary input jack, they offer the potential for even more music on the move. For crisp reception, an antenna is discreetly located within the rear spoiler.

And to ensure you don't get too far removed from the real world, in-built Bluetooth technology is installed in RX350 Limited. It interfaces with your compatible phone, for hands free mobile communication wherever your journey takes you.



You're sure to find the right storage compartment where you need it most. The door pockets have been moulded to accommodate a 1.5 litre drink container, or maps and magazines. There's even a secret storage area hidden under the multi function centre console to keep your valuables safe. In this compartment you will also find an auxiliary plug for your MP3 audio player and two power outlets.



The floor is lower and the cargo capacity is bigger. It's made even more expansive by rear seating that can be folded individually or completely in a range of configurations. You can accommodate large suitcases or long objects like skis with ease. The new RX is large enough to carry a mountain bike inside, or when it gets too dirty after riding forest trails, the roof rails above are sure to fit your bike rack.



You can start the engine at the touch of the start button, without ever removing your smart key or smart key card from your pocket.

Lexus Remote Touch controller finds remote locations

To help you reach your destination, RX350 Limited has employed similar technology to that found in micro surgery. In the centre console, there's a Lexus Remote Touch controller. Using 'haptic' technology, it allows precise control of the satellite navigation system without having to reach for the EMV screen. You can also fine tune the climate control, audio system and more with similar ease and precision.

This system provides greater feedback offering more intuitive control, performing almost as an extension of your fingertips. So for all its sophistication, it's remarkably simple to use.

Having selected your destination through the Lexus Remote Touch, directions are relayed to the EMV screen.



The best of both worlds for the real world

The new RX350 is powered by a 204kW, 3.5-litre V6 engine boosted by innovations that at times make it feel like a much bigger engine. Yet its fuel consumption and emission figures are more akin to those of a much smaller one. That's because Lexus engineers have created an engine designed to excel in a range of situations.

Imagine when the roof is laden with gear and you've a full load of passengers. That's when you need low end pulling power, so the engine retunes itself automatically. Or during spirited highway motoring you want crisp high speed performance, so the engine reconfigures itself to suit.

Dual Variable Valve Timing with intelligence (DVVT-i) helps satisfy these seemingly mutually exclusive goals, by continually retuning the four camshafts to deliver what you need, when you need it. In addition, sequential multi-port injection ensures fuel is sprayed under intense pressure creating a very fine mist, for high power with low emissions. Significant advances in the intake and exhaust manifold technology have led to further power increases, with fuel consumption and emission decreases.

Six cylinders, with six speeds to match

To optimise the delivery of all this power, Lexus engineers have developed a six-speed sequential automatic transmission, for crisp acceleration coupled with relaxed high speed cruising. By allowing the engine to operate in its optimum zone for more of the time, this six-speed transmission further maximises fuel economy. It was developed to be the lightest and smallest transmission in the compact luxury AWD vehicle class.

Direct downshift control ensures a smoother and more rapid transition to lower gears. When shifting from 6th to 3rd, or from 5th to 2nd, the intermediate gears aren't utilised resulting in a more direct downshift for a better response on occasions when you want crisp acceleration, such as during swift overtaking. So when you press the accelerator quickly, direct downshift control skips unnecessary gears and selects the optimum ratio for more immediate response.

To further reduce fuel consumption, the torque converter locks up in the lower as well as higher gears, ensuring direct drive without slippage for more of the time.

Performance on hills has also been enhanced as Artificial Intelligence (AI) shift control anticipates the correct gear selection in advance. This minimises unnecessary shifting for more sustained power when climbing hills and greater control on steep descents.



"We use technology, insight and knowledge to innovate, refine and to push the boundaries of intelligent, sophisticated technology." TAKESHI YOSHIDA, MANAGING OFFICER, LEXUS.

Ideas that stick

A comprehensive portfolio of traction enhancing technologies have been developed for the RX350 to give you a greater sense of control across a broad range of situations.

Lexus engineers have developed a new AWD system that adapts to road conditions, along with new advances in TRC and VSC. And in all models, an enhanced VDIM system ensures these innovations work more effectively together.

Active Torque Control AWD

An intelligent solution to AWD ensures you'll have the right amount of drive effort directed to the front or rear wheels as conditions dictate. Once you experience Active Torque Control AWD it will change the way you look at other luxury SUV's.

Since the road surfaces you encounter are constantly changing, Active Torque Control AWD changes accordingly. During normal driving on less challenging roads, 100 percent of the driving effort is assigned to the front wheels, for more efficient running by minimising unnecessary drag.

Should you venture onto wet, icy or otherwise slippery roads, driving effort is progressively directed towards the rear up to a maximum 50/50 front/rear balance.



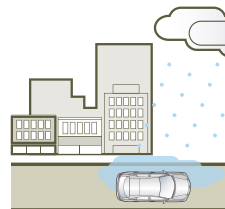
Then in more challenging surfaces such as mud, snow or ice, you can flick a switch on the centre console to 'AWD Lock' which ensures maximum torque is delivered to all wheels. That means all four wheels are assigned equal driving effort to help you drive out of slippery situations.

Advanced Traction Control (TRC)

The advanced TRC system has been recalibrated to work harmoniously with the new AWD technology. When you're accelerating from standstill on slippery or uneven road surfaces, TRC gives you a reassuring sense of control. It also provides enhanced cornering stability and grip in slippery conditions.

If the TRC system senses that a particular wheel is beginning to spin and lose traction, the skid control computer determines the best way to restore traction by reducing power and even apply braking. Unlike conventional traction control systems, the RX350 lets you switch off the TRC and VSC to maintain driving torque in challenging conditions.

STRAIGHT ROAD



Vehicle accelerates and stops in a stable way on inconsistent surfaces where one side is slippery
Traction Control
Anti-lock Braking System
Electronic Power Steering



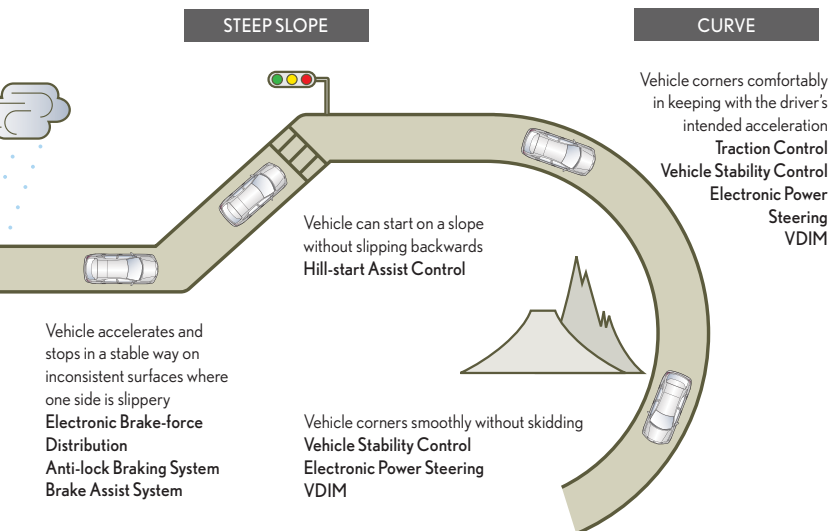
Vehicle Stability Control Plus (VSC+)

An advanced new Vehicle Stability Control Plus (VSC+) system enhances cornering on slippery roads. By controlling the braking system and the electronic throttle, it helps you correct an unexpected oversteer or understeer situation.

If you enter a corner too fast or encounter slippery surfaces, sensors located throughout the vehicle help the VSC+ system determine whether the vehicle is in danger of losing control. VSC+ then applies various corrective measures to help maintain your chosen line through the corner.

Vehicle Dynamics Integrated Management (VDIM)

To ensure all these systems work together, the VDIM system has undergone advances so it seamlessly integrates the operations of the ABS, TRC, VSC, AWD and the Electronic Power Steering (EPS). VDIM responds proactively even before the vehicle has reached its dynamic limits, giving you a reassuring sense of control. This results in superior straight line stability and cornering control, even during performance driving situations or when you encounter slippery surfaces.



Safety technology that looks ahead

Lexus engineers have equipped the RX350 with technologies to ensure it not only performs, but protects. So both RX350 models employ measures that are able to anticipate emergency situations, help you avoid them, then offer more effective restraint should the unthinkable occur.

Adaptive Front-lighting System (AFS)

The more visible reminders of the safety measures Lexus has taken include HID headlights with an Adaptive Front-lighting System (AFS). In both models, the low beams are directed while turning, so you can literally see around corners.

Comfort and control

For improved cornering control, a new rear suspension system featuring double trailing arms offers improved control on undulating road surfaces. This helps the tyres maintain contact with the road, for added grip. The MacPherson strut front suspension has also been retuned to be more agile and provide greater stability on twisty roads while improving ride comfort.

SRS restraint to the power of 12

Certain advanced safety measures on the RX350 are rather less visible. Neatly concealed within the opulent leather trim are 12 SRS airbags as standard in all models, so occupant safety is provided for, not offered as an option.

Dual front airbags include a twin chamber airbag for the front

passenger, which helps secure the passenger's upper body and helps spread the impact over a greater area. The SRS package extends to knee airbags for the driver and front passenger, front and rear curtain shield airbags, and side airbags in the front and rear.

Rear guard action

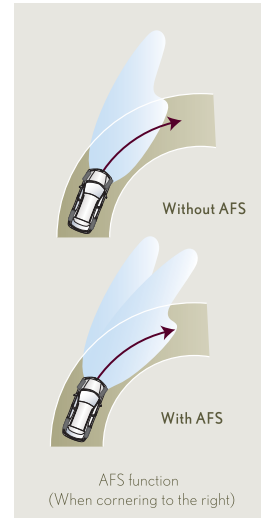
Active headrests help support the front seat occupants' heads in the event of a rear collision. Lexus engineers have installed a mechanism into the seatback which moves the headrest up and forward to help support the occupant's head, helping alleviate whiplash effects.

A Pre-Crash safety System (PCS) watches the road

A pre-crash safety system constantly watches the road in the RX350 Limited. Its 'eyes' are a millimetre wave radar sensor mounted behind the Lexus 'L' emblem in the front grille.

The radar sensor relays information about what lies ahead. If ever it detects a high risk situation, it notifies you with a warning buzzer and a visible 'BRAKE' alert on the multi information display. PCS also readies pre-crash Brake Assist (BA) to supplement your braking effort and operates the pre-crash seatbelts to provide optimum restraint.

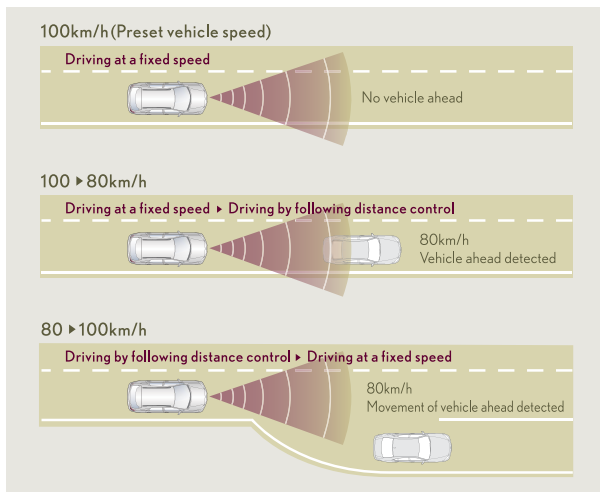
These systems are other ways Lexus is looking further ahead for your safety.



The adaptive front-lighting system gives greater visibility for night time manoeuvres.



RX350 projects the reversing camera image right where you need it - in the rear view mirror.



RX350 Limited hides a sophisticated safety feature behind the front grille logo. Dynamic Radar Cruise Control adds a significant safety measure that assists by monitoring following distances.

Cruise easier with dynamic radar cruise control

The dynamic radar cruise control also utilises the radar sensor in the grille. When you're travelling at highway speeds, if a vehicle crosses your path, it slows you down to help maintain a safe following distance. You have the flexibility of selecting long, medium or short distance from vehicles ahead. Once the other vehicle moves away, your preset cruising speed is resumed.

Eyes in the back of your head

Both models are equipped with a reversing camera which offers a vivid image of the area behind the vehicle that can be difficult to view from the driver's seat. For RX350 the reversing camera view appears in the rear view mirror when reverse is selected. RX350 Limited displays its reversing camera view in the EMV screen. The rear guide assist reference lines in RX350 Limited help you judge distances during tight manoeuvres. Both models also come equipped with park assist sonars which provide audible warning to give further guidance while parking.

Lexus Care

Lexus Warranty

An important part of the peace of mind that comes with owning a Lexus is the built-in warranty on your vehicle. Each Lexus vehicle comes with a 4 year or 140,000 kilometre* warranty and is supplemented by a 6 year corrosion perforation warranty. This Warranty is offered to the first owner and subsequent owners within this 4 year period.

* 4 Year Warranty is made up of 3 year New Vehicle Warranty and 1 year Lexus Care Warranty.

Lexus Service Plan

The Lexus Full Maintenance Service Plan that accompanies every new Lexus covers all parts and labour costs associated with the Lexus recommended service schedule for a period of 4 years or 140,000 kilometres* from the date of first registration and may include a replacement set of four tyres if required. It combines an exacting standard of maintenance with a high level of customer convenience and ensures your Lexus is serviced, as it should be - by specially trained Lexus technicians. * whichever occurs first under normal operating conditions.

Lexus On Call

With Lexus On Call we've made sure the service that makes Lexus unique will always be as close as your phone or computer. This way, you can summon assistance whenever required. In the event of an emergency or breakdown we like to take special care of you and your Lexus. Your comments are also important to us, so you're most welcome to contact us anytime and talk to us about your Lexus experience.

Lexus On Call is your direct link to Lexus support.

FREEPHONE: 0800 4 LEXUS (0800 453 987) - 24 hours

WEB: www.lexus.co.nz

EMAIL: oncall@lexus.co.nz

Lexus Plus

We know that a helping hand can be invaluable in an emergency. Lexus Plus, in conjunction with the New Zealand Automobile Association (AA), provides a special nationwide emergency service for Lexus owners. The Lexus Plus programme provides extended protection against the possibility of being stranded away from home because of a vehicle breakdown. It gives you constant access to immediate help 24 hours a day, seven days a week.



LEXUS OF NORTH SHORE

Corner of Link Drive and Target Road
Wairau Park, NORTH SHORE CITY
P O Box 100550, NORTH SHORE MAIL CENTRE,
NORTH SHORE CITY
Phone: 09 442-3670

LEXUS OF AUCKLAND CITY

101 Great North Road, Grey Lynn, AUCKLAND
P O Box 8947, Symonds Street, AUCKLAND
Phone: 09 523-1841

LEXUS OF HAWKE'S BAY

505 North Karamu Road, HASTINGS
P O Box 165, NAPIER
Free Phone: 0800 425-3987 (0800 HB LEXUS)
Phone: 06 872-8222

Lexus Plus offers a wide range of services whether you require roadside assistance to recover your vehicle, emergency windscreen replacement, alternative transport home or even assistance with changing travel plans if you are unexpectedly delayed. Lexus will also arrange any accommodation and rental car requirements that may arise if breakdown repairs cannot be completed on the day of the emergency. The service even extends to transporting replacement clothing to you, or to passing on urgent messages to family, friends or colleagues.

Lexus Financial Services

There is an extensive range of tailored finance solutions available through your Lexus dealer designed to make acquiring a Lexus as effortless as driving one. Whether you require a fleet or personal finance plan, there are a wide range of options for leasing or purchasing a vehicle to suit your individual needs.



LEXUS OF WELLINGTON
54 Kent Terrace, WELLINGTON
P O Box 9541, Marion Square, WELLINGTON
Phone: 04 802-0610

LEXUS OF CHRISTCHURCH
227 Montreal Street, CHRISTCHURCH
P O Box 22482, High Street, CHRISTCHURCH
Free Phone: 0800 466-453
Phone: 03 363-8748

FOR FURTHER DEALER INFORMATION VISIT:
www.lexus.co.nz/mylexusdealer
FOR SERVICE AGENTS THROUGHOUT NEW ZEALAND VISIT:
www.lexus.co.nz/partsandservice

Specifications RX350 / RX350 Limited

DIMENSIONS:

Overall length:	4770mm
Overall width:	1885mm
Overall height:	1720mm*
Wheelbase:	2740mm
Minimum ground clearance:	180mm
Approach angle:	28.8°
Departure angle:	24.8°
Gross vehicle weight:	2545kg
Kerb weight:	1975 - 2085kg
Towing capacity braked:	1500kg
Towing capacity unbraked:	750kg

* Overall height reduces to 1690mm when Panorama Glass Roof is fitted as roof rails are removed

MECHANICAL FEATURES:

	RX350	RX350 LIMITED
3.5 litre quad cam 24 valve V6 engine with DVVT-i develops 204kW of power @ 6200rpm and 346Nm of torque @ 4700rpm.	•	•
Premium grade 95 octane petrol is recommended (91 octane is acceptable). Tank capacity is 72 litres.	•	•
Fuel consumption 10.8L/100km / CO ₂ emissions - 254g/km*	•	•
Active Torque Control, on-demand 4WD with lockable rear coupling, 6-speed Super Electronically Controlled automatic Transmission (ECT) with Artificial Intelligence (AI), lock-up torque converter, snow and sequential manual modes.	•	•
MacPherson strut independent front suspension. Trailing arm double wishbone independent rear suspension.	•	•
Engine speed sensitive power-assisted rack and pinion steering. Turning circle is 11.4m. Turns lock to lock 2.79.	•	•
Power-assisted ventilated front and solid rear disc brakes with Anti-lock Braking System (ABS), Electronic Brake-force Distribution (EBD) and Brake Assist (BA). Pedal type parking brake.	•	•
Vehicle Stability Control (VSC) and Traction Control (TRC).	•	•
Vehicle Dynamics Integrated Management (VDIM).	•	•
7.5J x 18" alloy wheels fitted with 235/60 R18 steel belted radial ply tyres. Temporary type spare tyre.	•	
7.5J x 19" alloy wheels fitted with 235/55 R19 steel belted radial ply tyres. Temporary type spare tyre.		•
OPTIONAL EQUIPMENT:		
Mark Levinson Audio - AM/FM radio with 6 disc MP3/WMA compatible CD/DVD changer, 15 speakers, auxiliary input jack.		•
Power glass sunroof with tilt and slide functions.	•	
Panorama glass roof with electronically operated sun shade (roof rails removed with this option).		•
Full size spare tyre.	•	•

*Fuel consumption and CO₂ information will vary depending on driving conditions/style, vehicle condition and options/accessories fitted - ADR81/01 combined cycle.

FEATURES:	RX350	RX350 LIMITED
High Intensity Discharge (HID) headlights with Adaptive Front-lighting System (AFS) - low beam linked to steering wheel direction.	•	•
Headlight control system with auto on and off; headlight cleaners.	•	•
Rain-sensing washer-linked variable intermittent wipers.	•	•
Body coloured electric automatic glare-resistant electrochromic exterior rear view mirrors with retract, heating, reverse tilt down and foldaway functions, memory, side indicators and puddle lights.	•	•
Metallic scuff plates (Illuminated for RX350 Limited).	•	•
Driver and passenger front (dual stage for driver and passenger, twin chamber for passenger), knee, front and outer rear seat side and front/rear curtain shield airbags.	•	•
Pre-crash safety system.	•	•
Leather seats and door trim; front seat heaters.	•	•
Driver and front passenger power seat adjustment with 3 driver memory settings; active front headrests; easy access power system for driver's seat and steering wheel.	•	•
60/40 split folding rear seats, separate slide and recline functions, remote folding function and boot access.	•	•
3 spoke leather steering wheel with audio and multi-information display controls; power tilt and telescopic steering with memory.	•	
3 spoke leather/wood steering wheel with audio, Bluetooth, dynamic radar cruise control and multi-information display controls; power tilt and telescopic steering with memory.		•
Wood centre console, gear lever, door inserts and rear seat centre armrest inserts.		•
Climate control air conditioning with separate driver and passenger controls; clean air filter.	•	•
Power windows with all-door one touch auto up/down and anti-jam safety functions; side and rear privacy glass with UV reduction; auto window closing system and key-off operation.	•	•
Cruise control (dynamic radar cruise control for RX350 Limited).	•	•
Optitron instrument panel; multi-information display; outside temperature display; Ecodriven indicator.	•	•
Remote central door locking with card key, remote boot access for power operated tailgate with answer back and panic functions; engine immobiliser, security alarm and intrusion sensor.	•	•
Front and rear park assist system and reversing camera.	•	•
Luggage area lights, luggage tie-down hooks; tonneau cover.	•	•
Lexus Audio - AM/FM radio with 6 disc MP3/WMA CD changer with 9 speakers; audio input jack.	•	
Lexus Audio - AM/FM radio with 6 disc MP3/WMA CD changer with 12 speakers, Bluetooth, audio input jack.		•
8" EMV (Electro Multi-Vision) Display with DVD Satellite Navigation, trip information, Bluetooth telephone capability, reversing camera, climate control air conditioning and audio functions. Lexus Remote Touch.		•

Exterior colours



077 White Pearl Crystal Shine



1G1 Silver Metallic



4T1 Metallic Beige



4T5 Sable Mica Metallic



3R1 Burgundy Mica Crystal Shine



8U0 Sapphire Mica Clear Colour

Interior colours



8U9 Blue Pearl Metallic



00 Ivory - available with all exterior colours



RX350

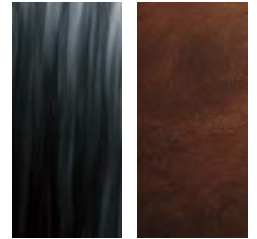
RX350 Limited



1G0 Graphite Mica



10 Light Grey - available with all exterior colours



RX350

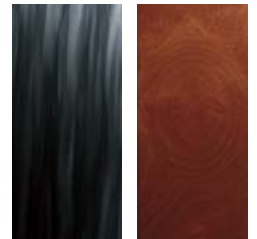
RX350 Limited



212 Onyx



20 Black - available with all exterior colours



RX350

RX350 Limited

Our responsibility to the future

Lexus is committed to offering state of the art technologies which benefit people and society, such as hybrid powertrains that reduce fuel and exhaust emissions.

Lexus uses an environmental design assessment known as 'the Eco-Vehicle Assessment System' (Eco-VAS) to evaluate the vehicles' environmental footprint at every stage of its lifecycle - from its manufacture to use and disposal.

This approach has driven across the board refinements, including a dramatic reduction in the use of lead, innovative materials to replace hexavalent chromium, chlorine and PVC, and introducing components with superior recycling properties.

Every endeavour has been made to ensure text details and specifications contained in this publication were accurate as at 4 March 2009. Lexus New Zealand reserves the right at any time to introduce any changes deemed necessary to improve the models shown or for any other reason. Paint and upholstery colours shown in this brochure may differ from actual colours due to variations in printing processes. Some models shown in this brochure may have optional accessories fitted. For further information contact your nearest Authorised Lexus Dealer. They will be glad to assist.

500 • LEXUSRX6 • March 2009

